

Upgrade the Datasets in NSDI for Smarter Services – with the Cases of China

By

Dr. JIANG Jie

**Dept of GeoInformaiton Service Platform
National Geomatics Center of China**

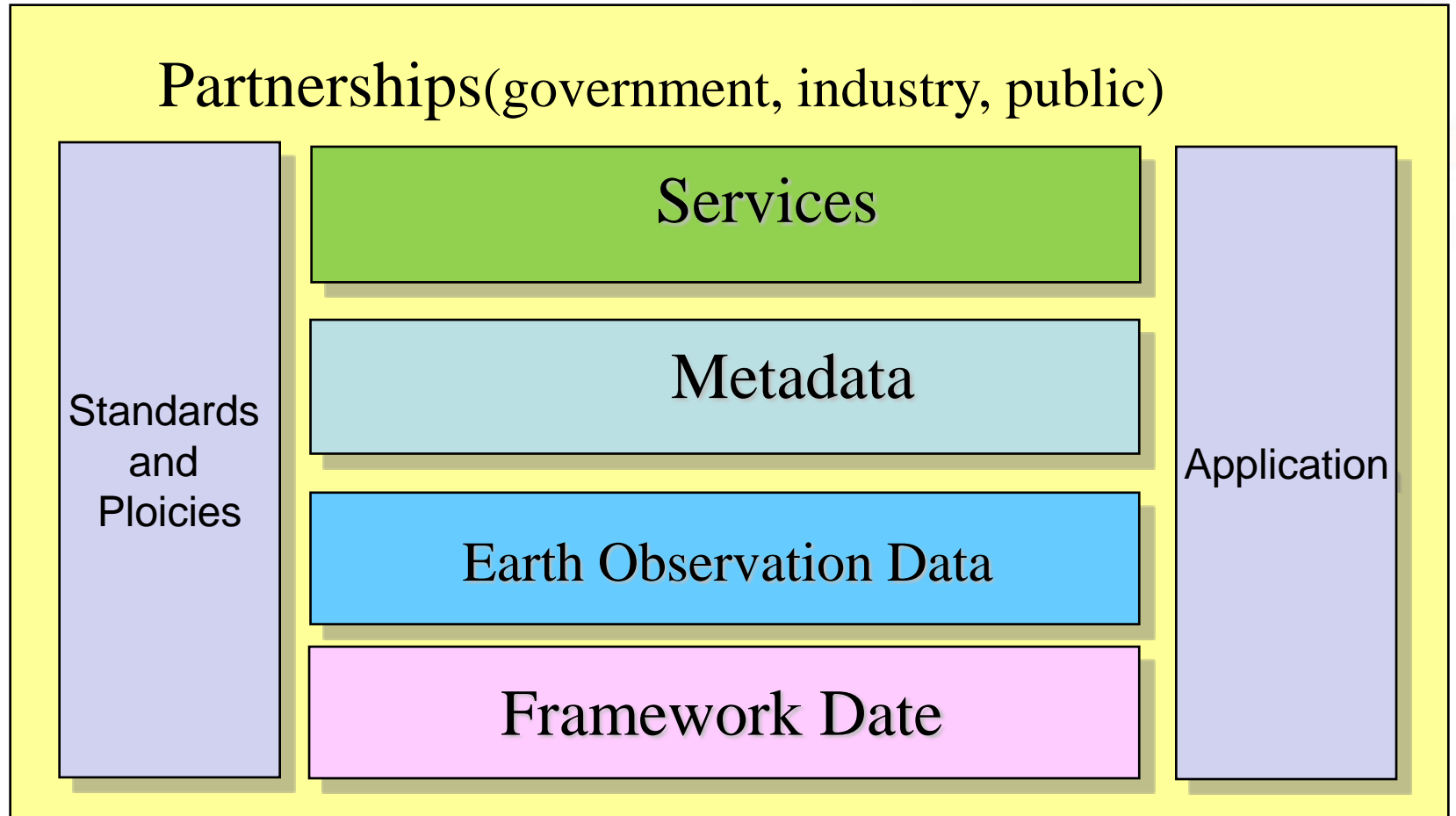
October 7, 2015

Jeju, Republic of Korea

Outlines

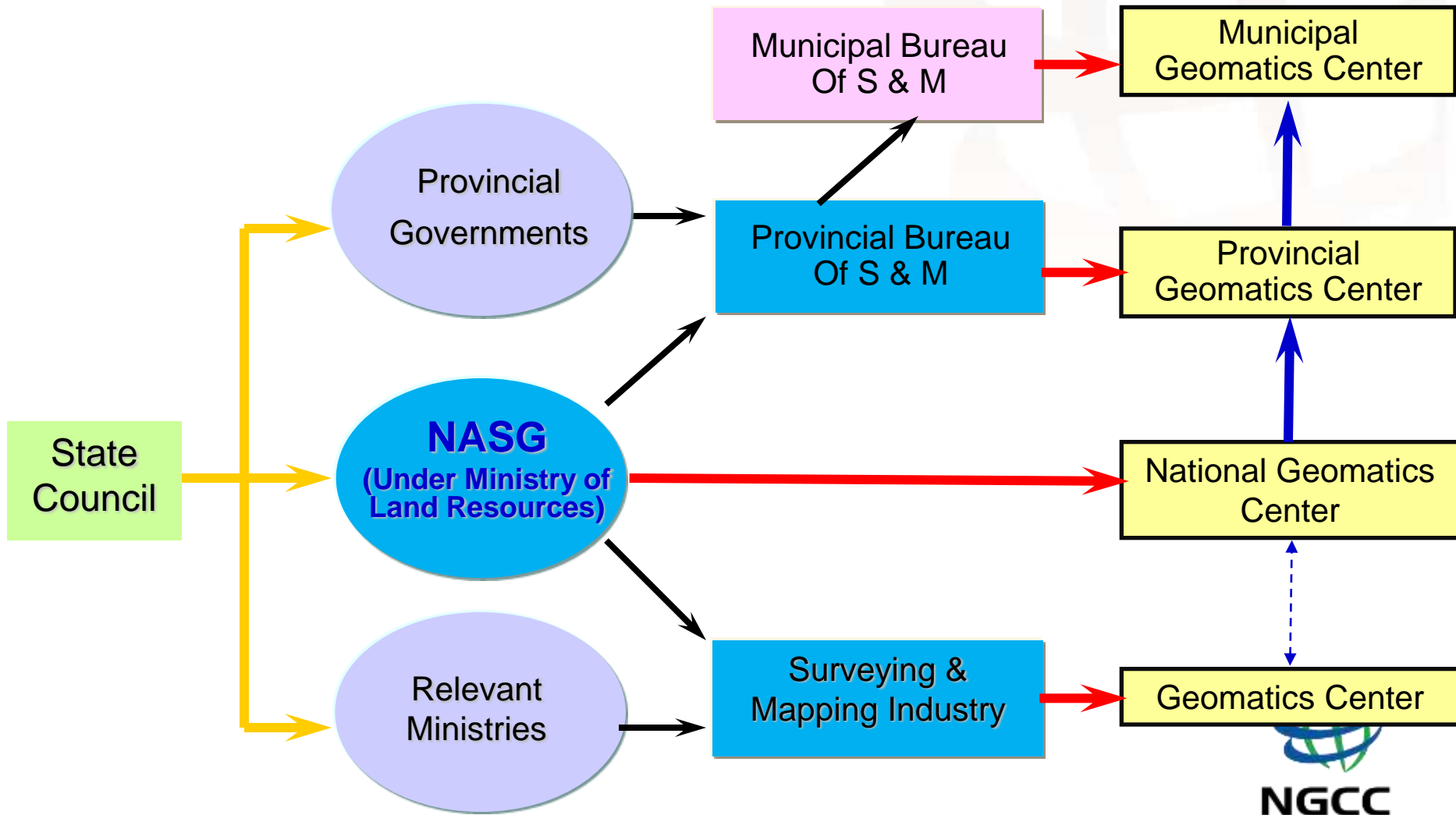
- **The development of NSDI in China**
- Data Upgrade for better services
- Suggestions

Components of NSDI in China



Policies

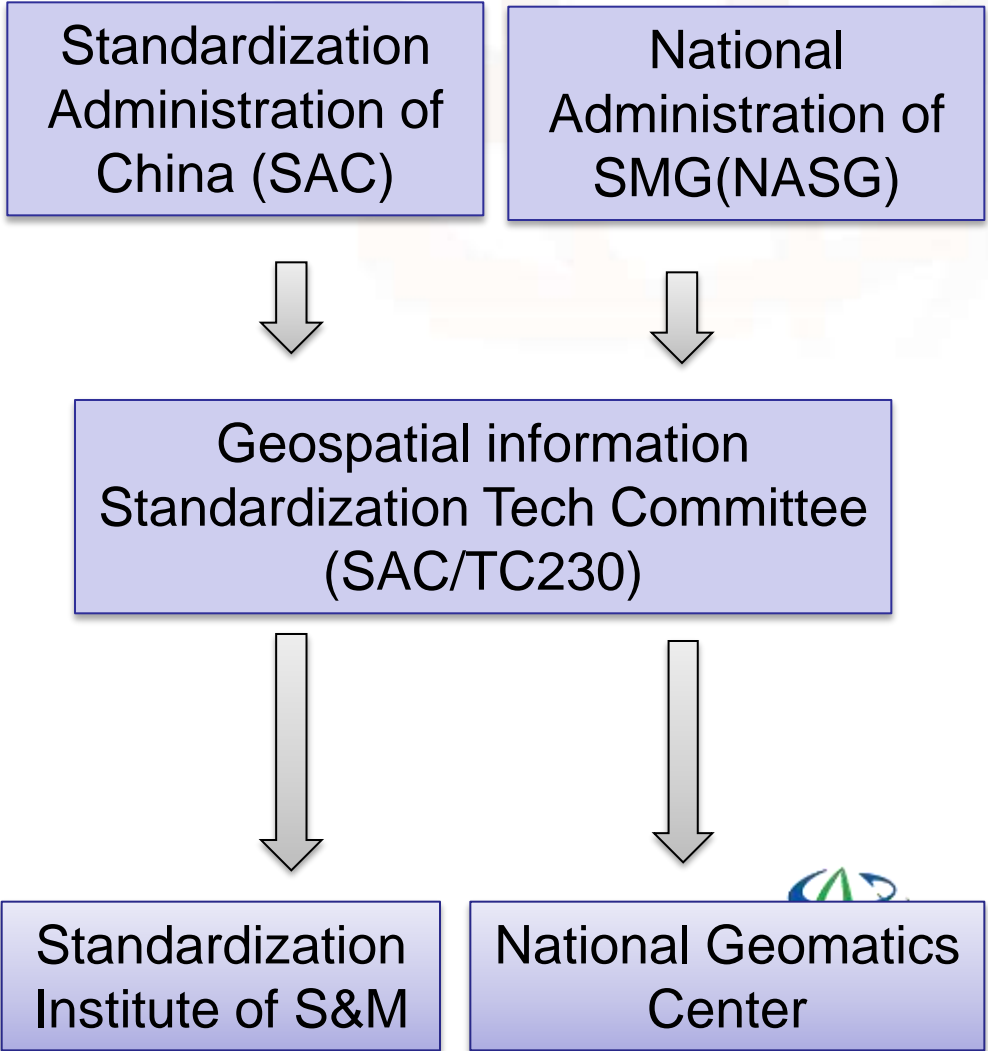
-- Surveying and Mapping Agencies in China



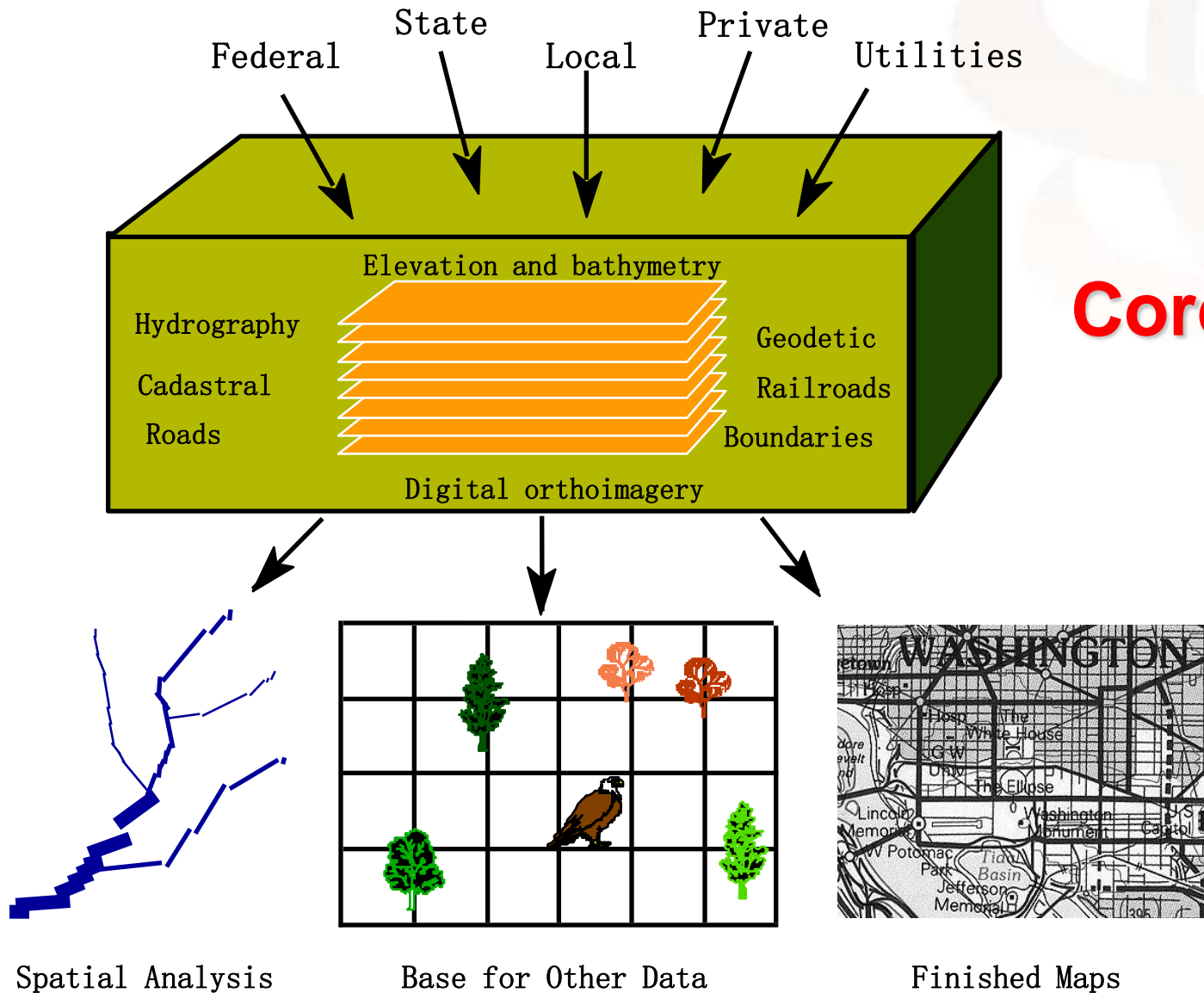
NASG: National Administration of Surveying, Mapping and GeoInformation

Standards

ISO/TC211



Framework Data

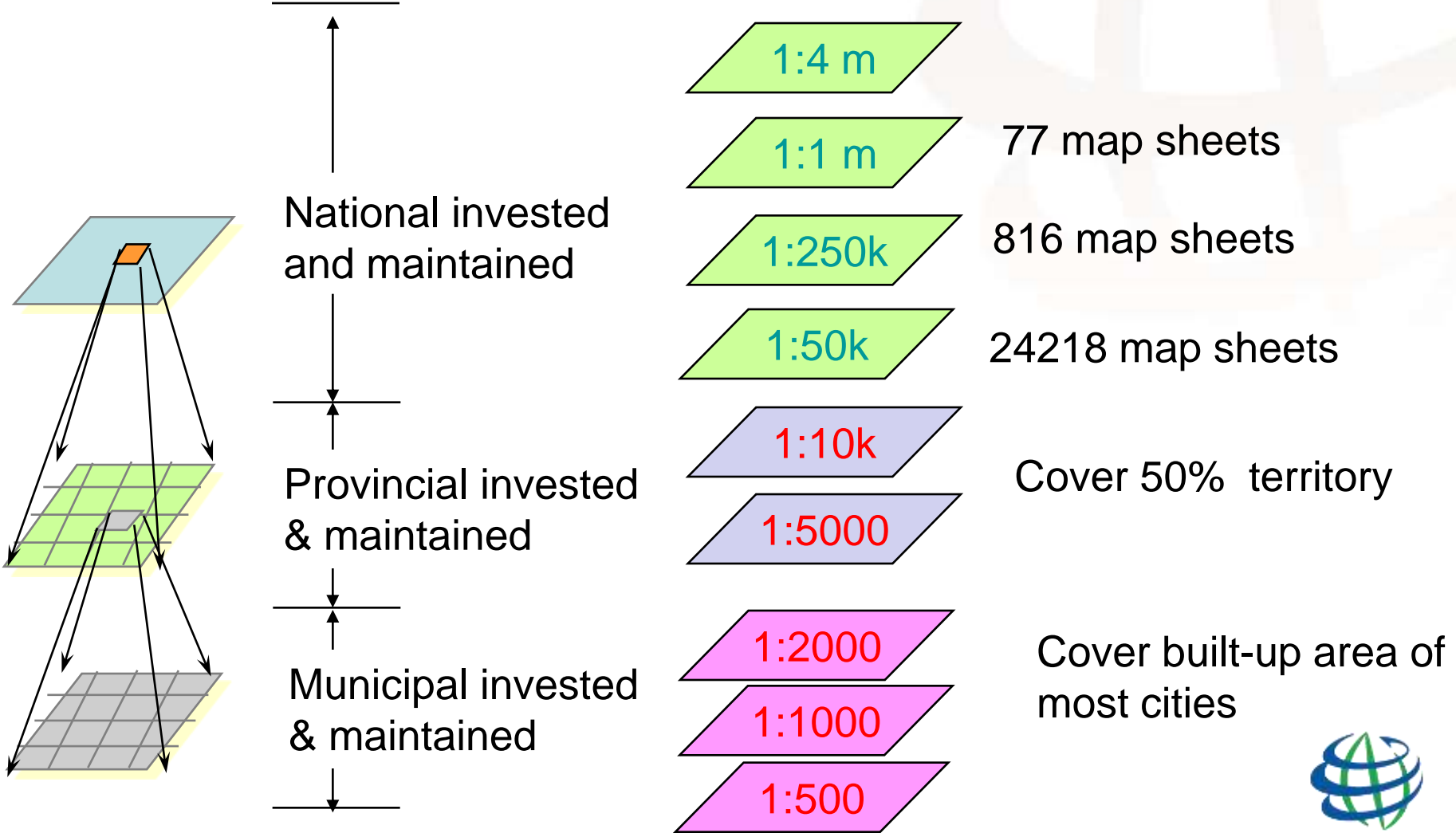


Core of NSDI



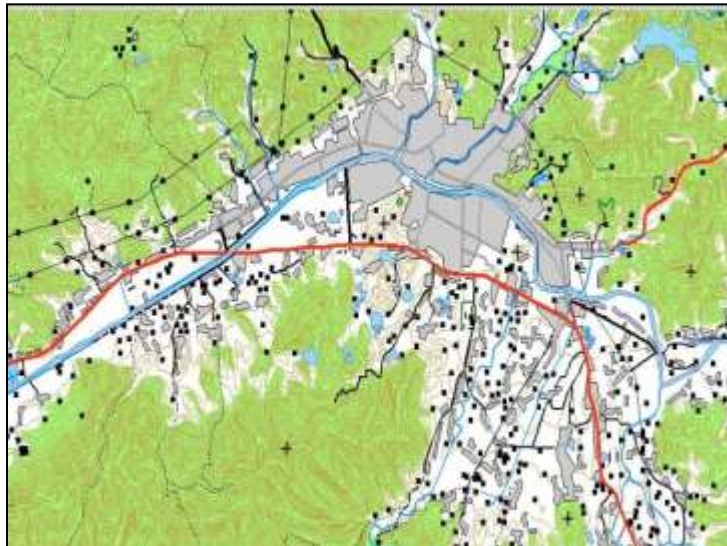
Framework Data

-- Multi-scale Topographic Map



Framework Data

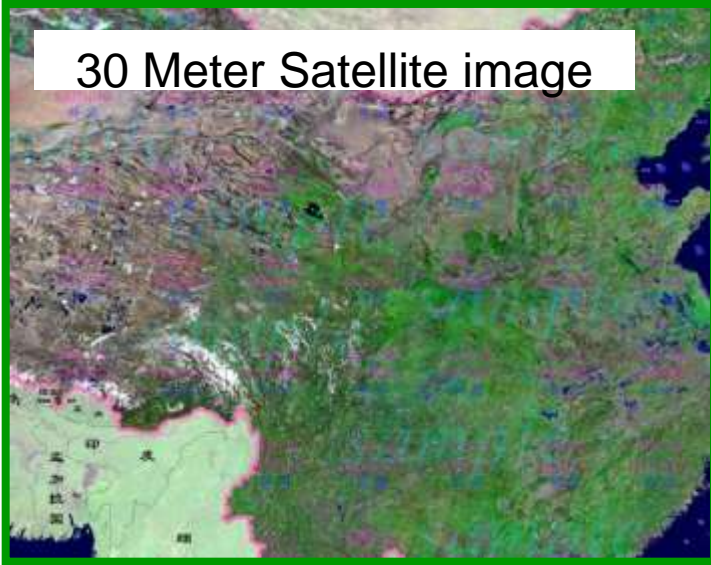
--Vector Datasets



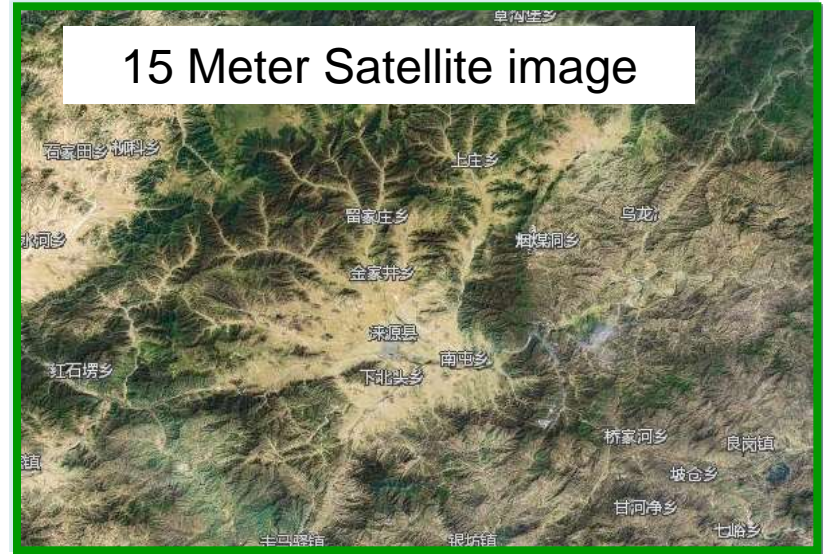
Framework Data

--DOM Datasets

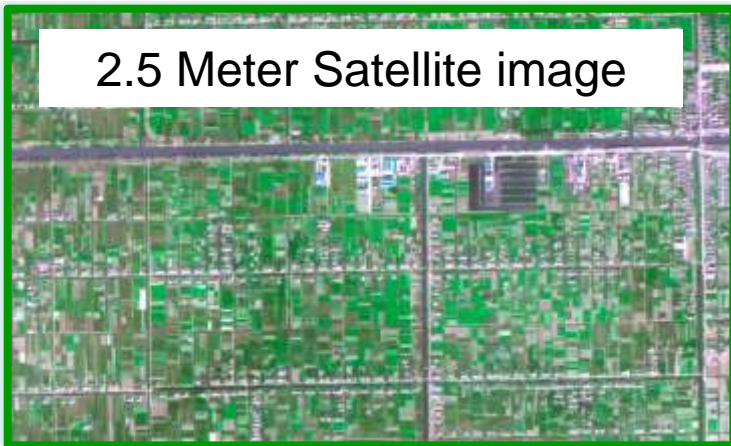
30 Meter Satellite image



15 Meter Satellite image



2.5 Meter Satellite image

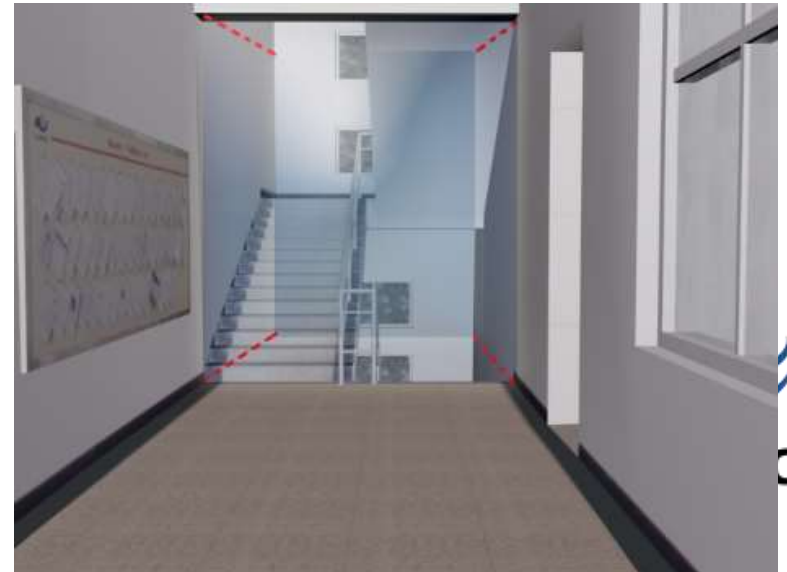
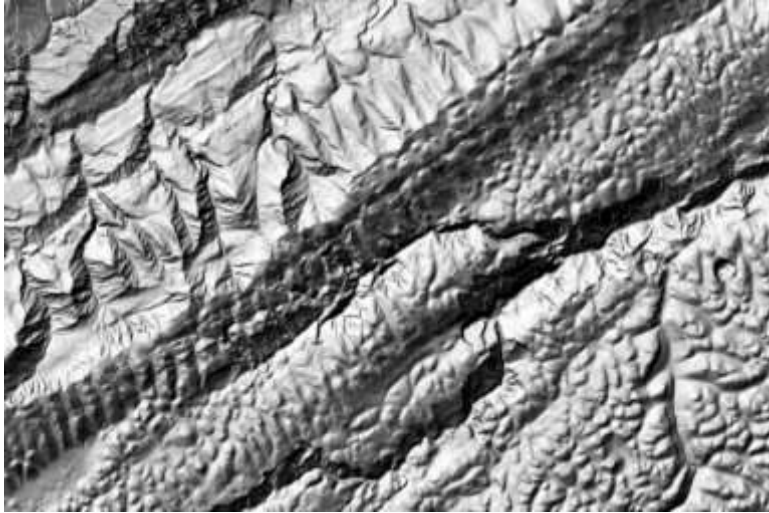


0.5 Meter Satellite image



Framework Data

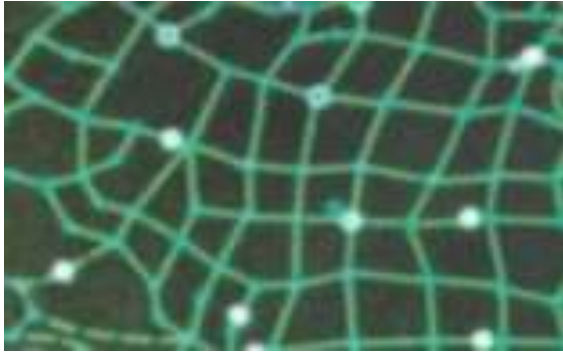
--DOM Datasets



Framework Data

--Geodetic Datasets

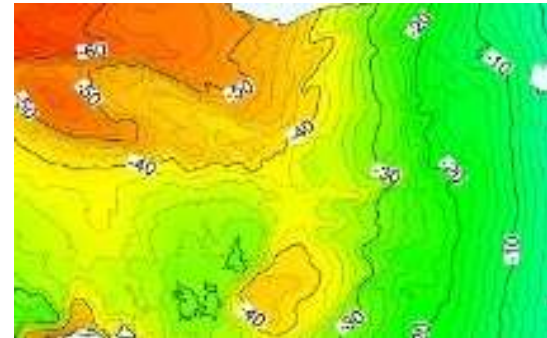
Astro-Geodetic Network



Leveling Network



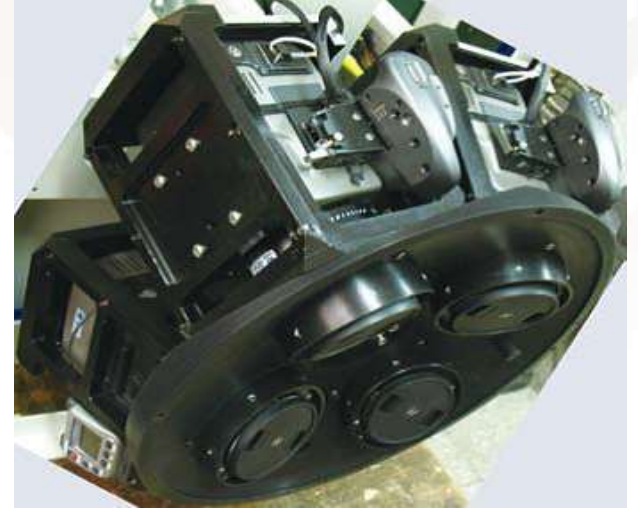
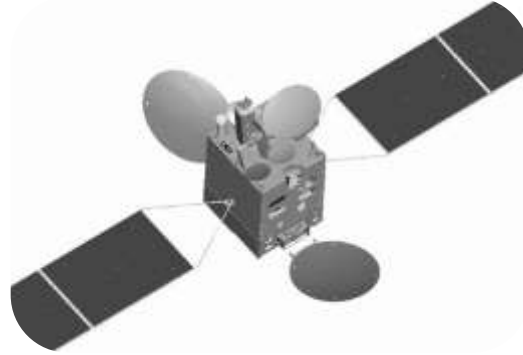
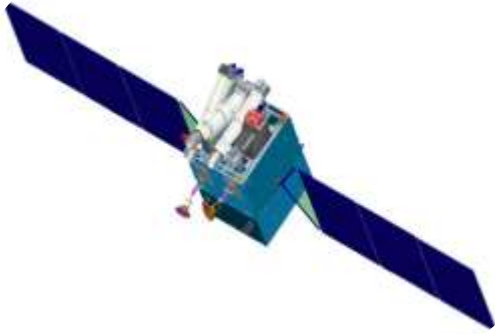
GPS Network

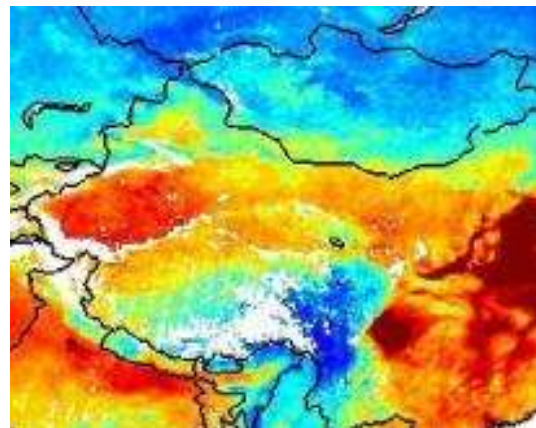
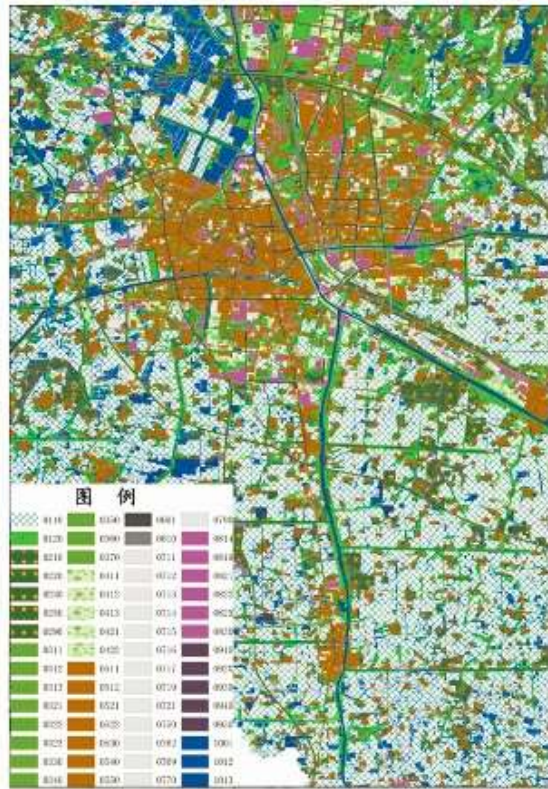
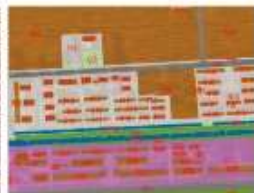


Basic Gravity Network



Earth Observation Data





Service

-- Data Distribution

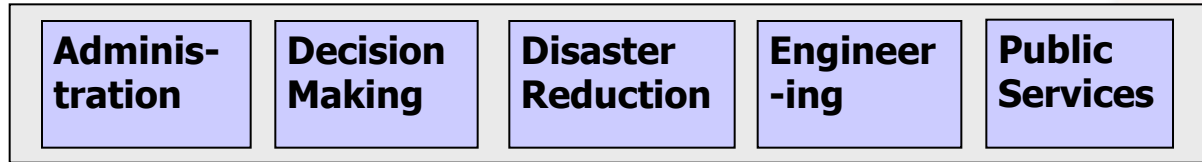


- ✓ Meta data searching
- ✓ Hard Copying

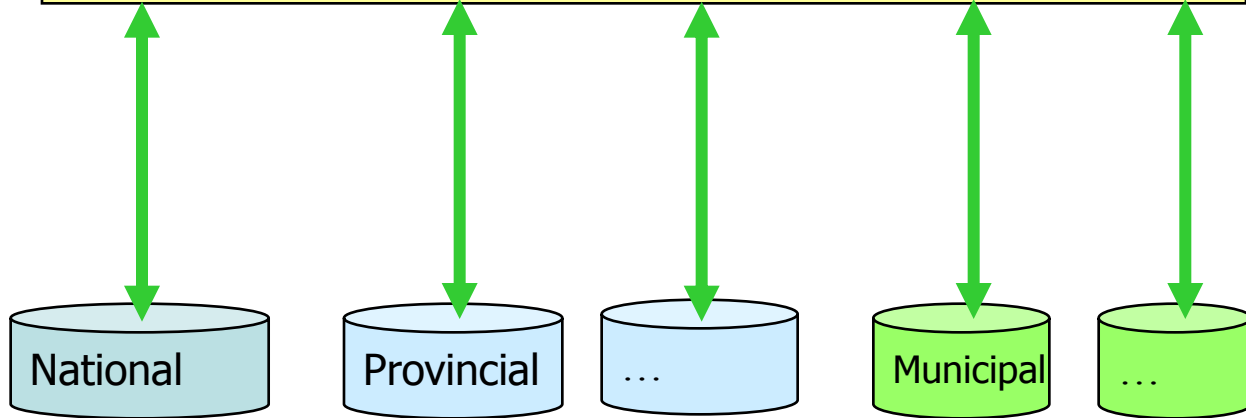


Service

-- Web-based Platform (Portal)



- “One-stop” portal
- on-line Services



1:1M、1:250K、1:50K

1:10K、1:5K

1:2K、1:1000、1:500

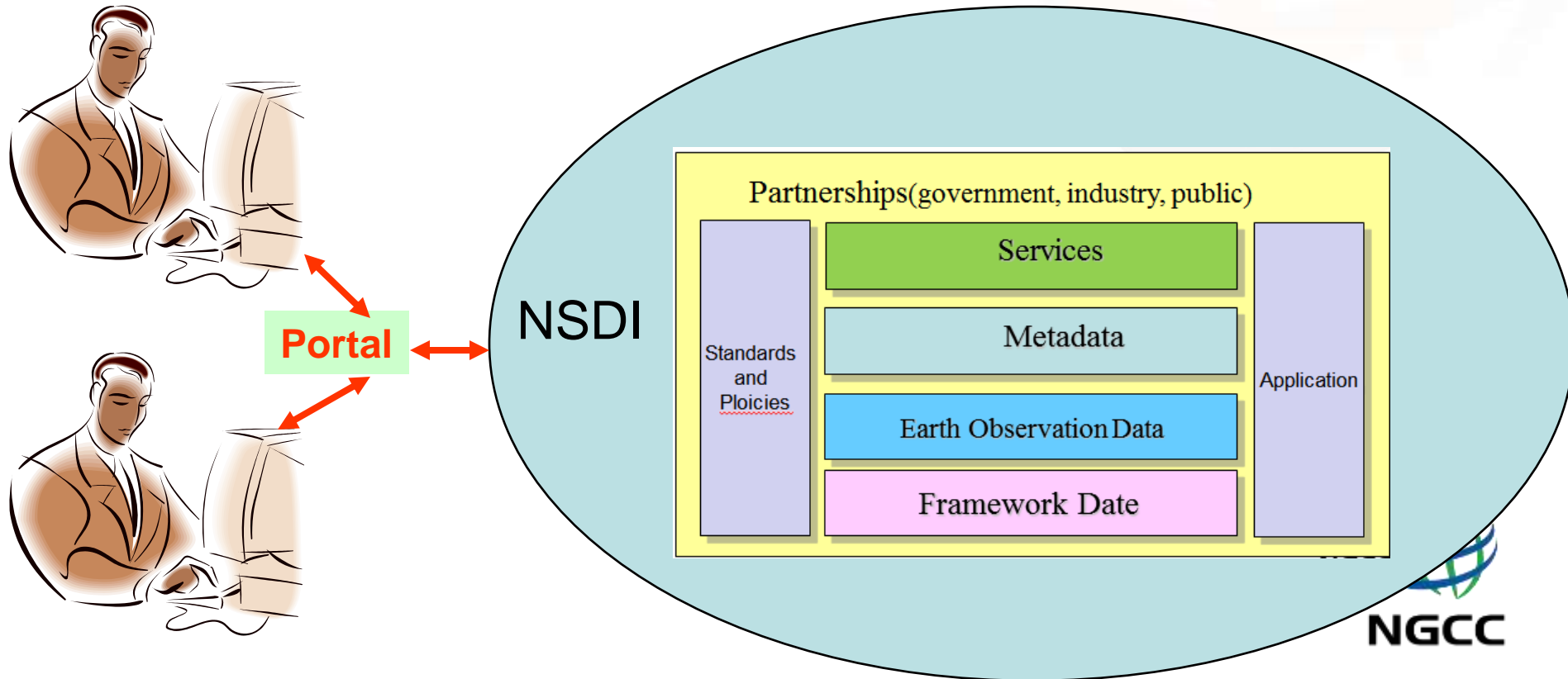


Service

-- Web-based Platform (Portal)

Portals are the 'Face' of NSDI

-- provide the critical linkage between the data of SDI and its use



Service

-- Web-based Platform (Portal)

Benefits of the Portal

- Provides Organized Access to Geospatial Resources
 - Gateway to a spatial data infrastructure
- Value to Organization
 - **Collaboration** - Publish, share, and disseminate data and GIS Web services across the SDIs
 - **Searching** – Discover, connect to, and utilize GIS data and Web services
 - **Awareness** – Organize geospatial resources in one place for the Agencies
 - **Categorization** – Catalog GIS data and web services within the context needed
- Supports / Facilitates:
 - Faster discovery
 - Direct access and use
 - Improvement of data quality and coverage
 - Collaboration for new data collection

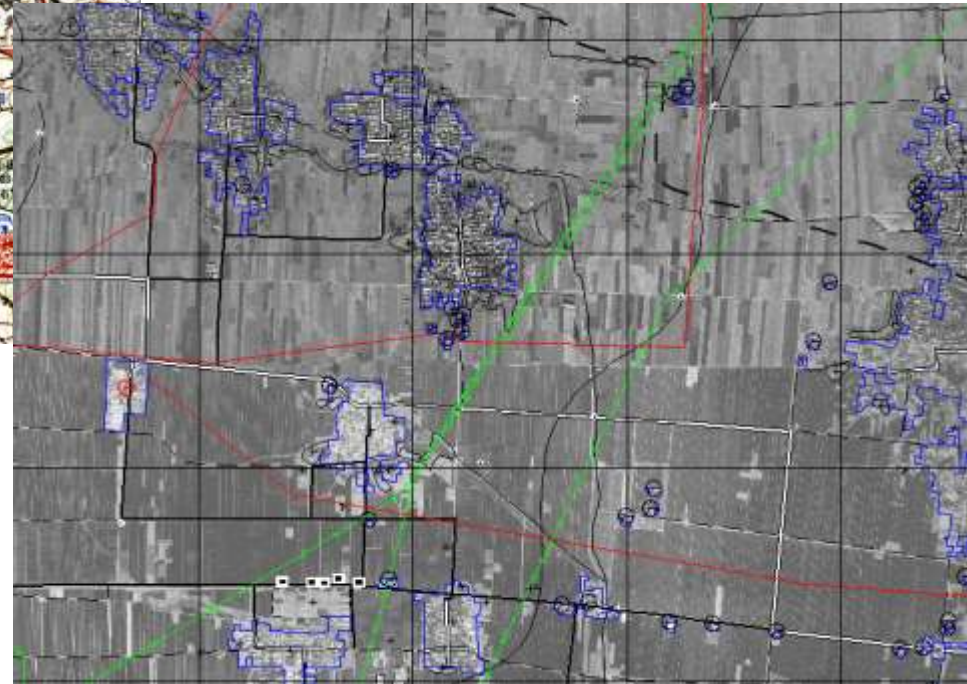
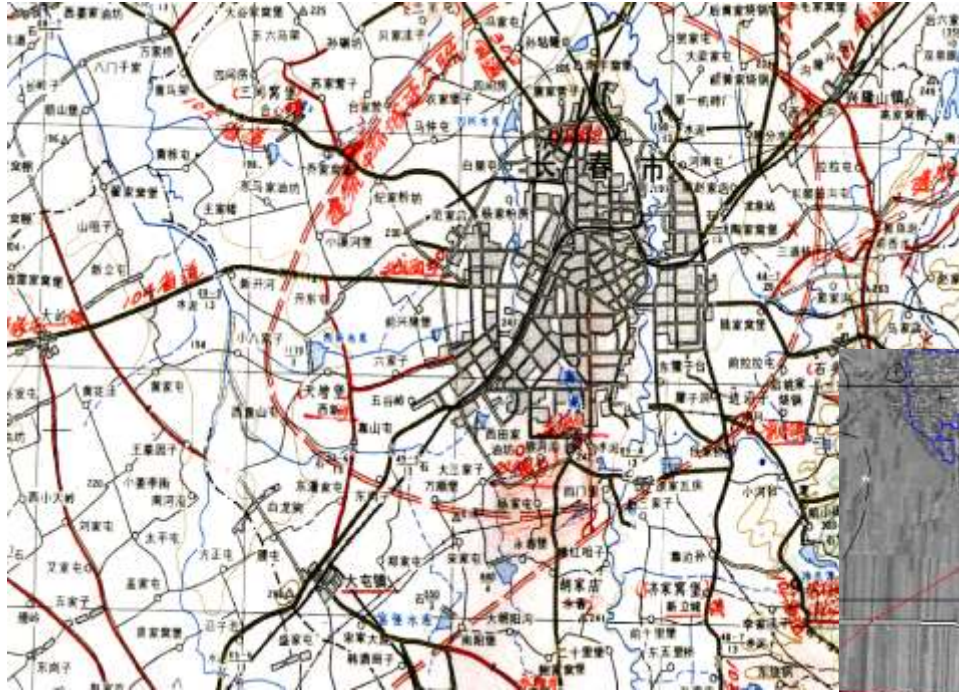


Outlines

- The development of NSDI in China
- **Data Upgrade for better services**
- Suggestions

Upgrade for Smarter Services

-Updating



NGCC

Rapid and constant change

Upgrade for Smarter Services -Updating

5 years

Version 3.0

Dynamic Updating

-- V 2012

-- V 2013

-- V 2014

-- V 2015

.....

5 years

Version 2.0 2011

Data Updating

8 years

Version 1.0 2006

Data production

The 1:50k updating History



Upgrade for Smarter Services

-Updating



Before updating



Before updating



Upgrade for Smarter Services

-Updating



Before updating



Before updating

Upgrade for Smarter Services

-Updating



Before updating



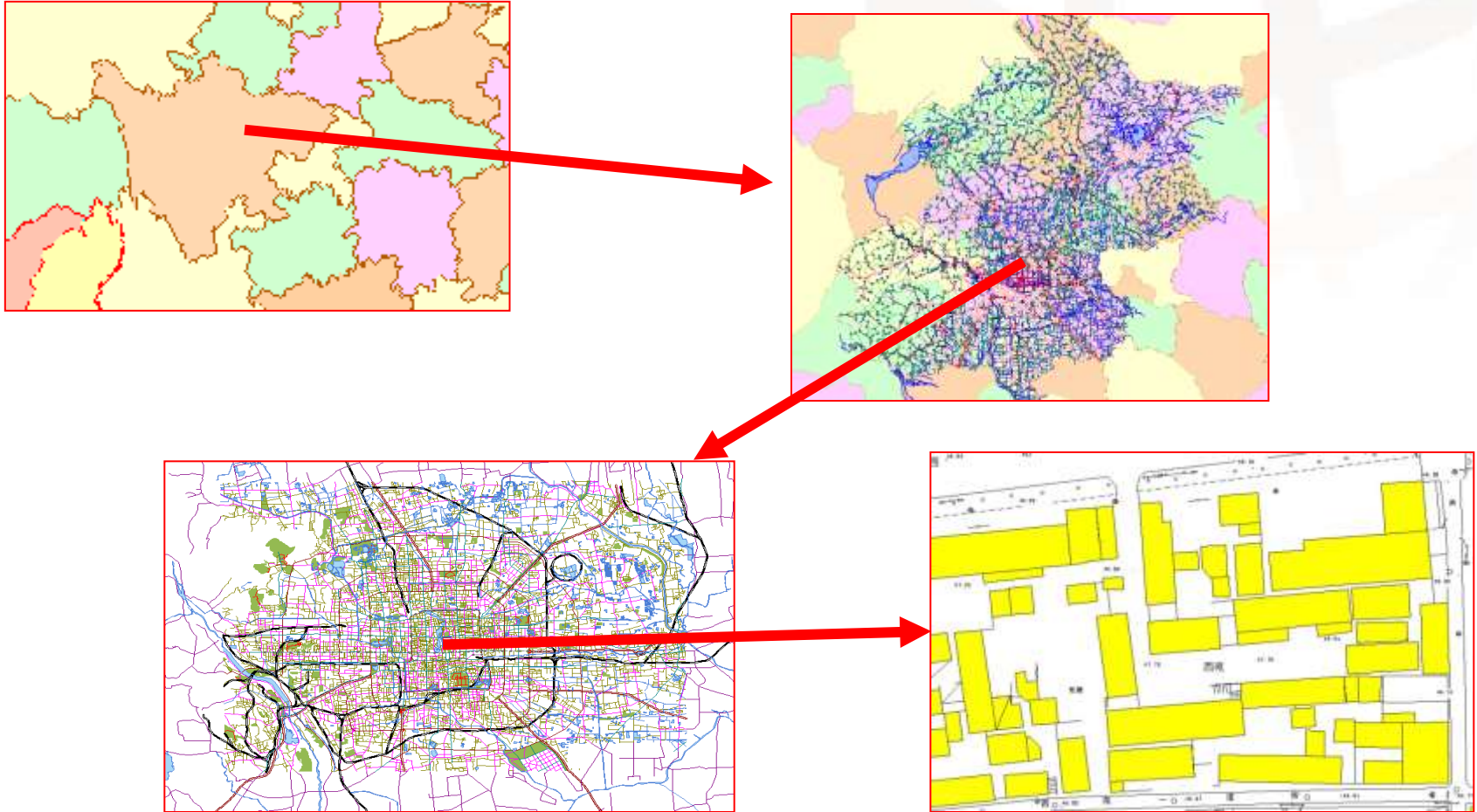
Before updating



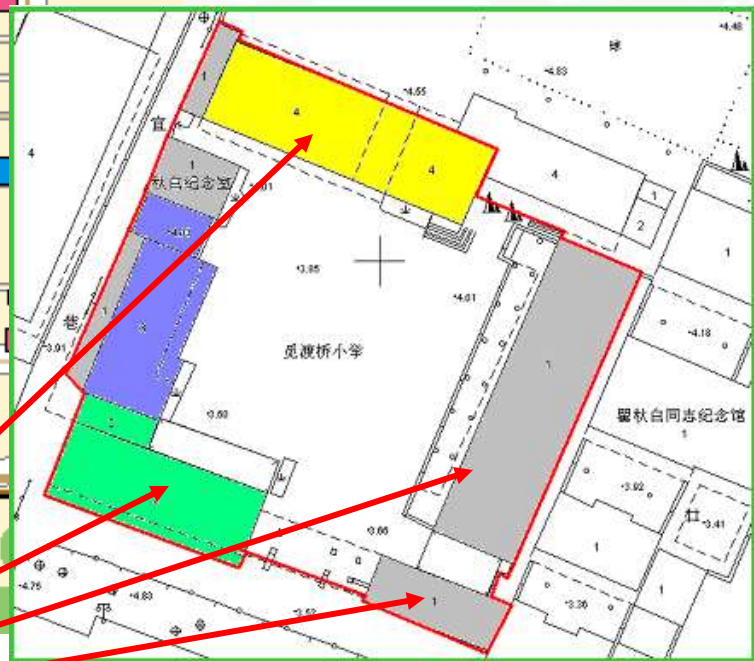
NGCC

Upgrade for Smarter Services

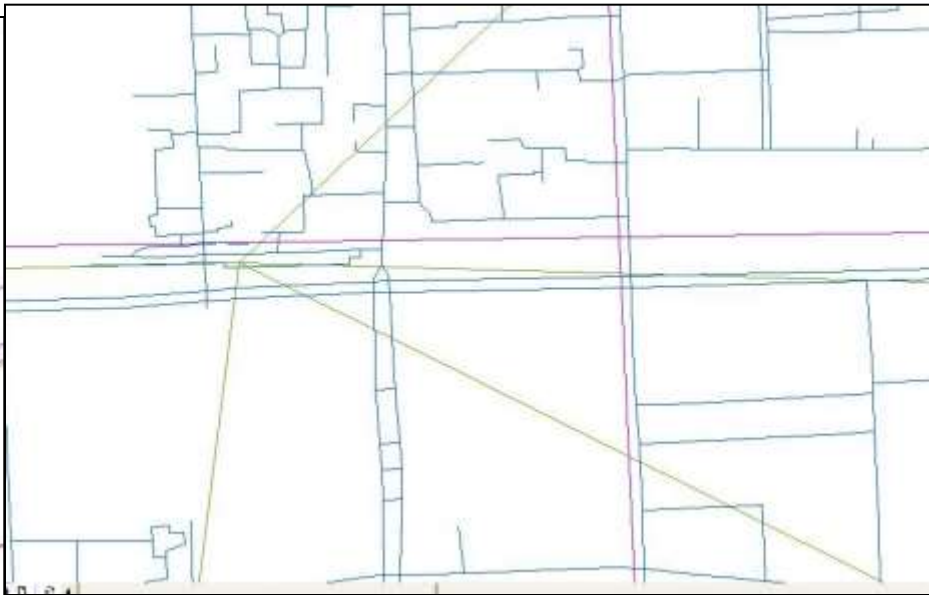
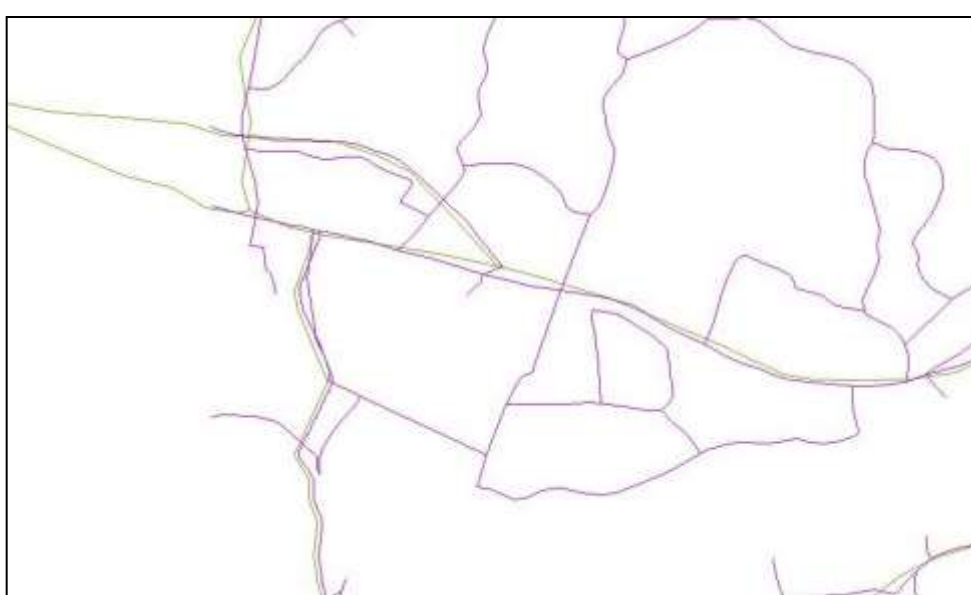
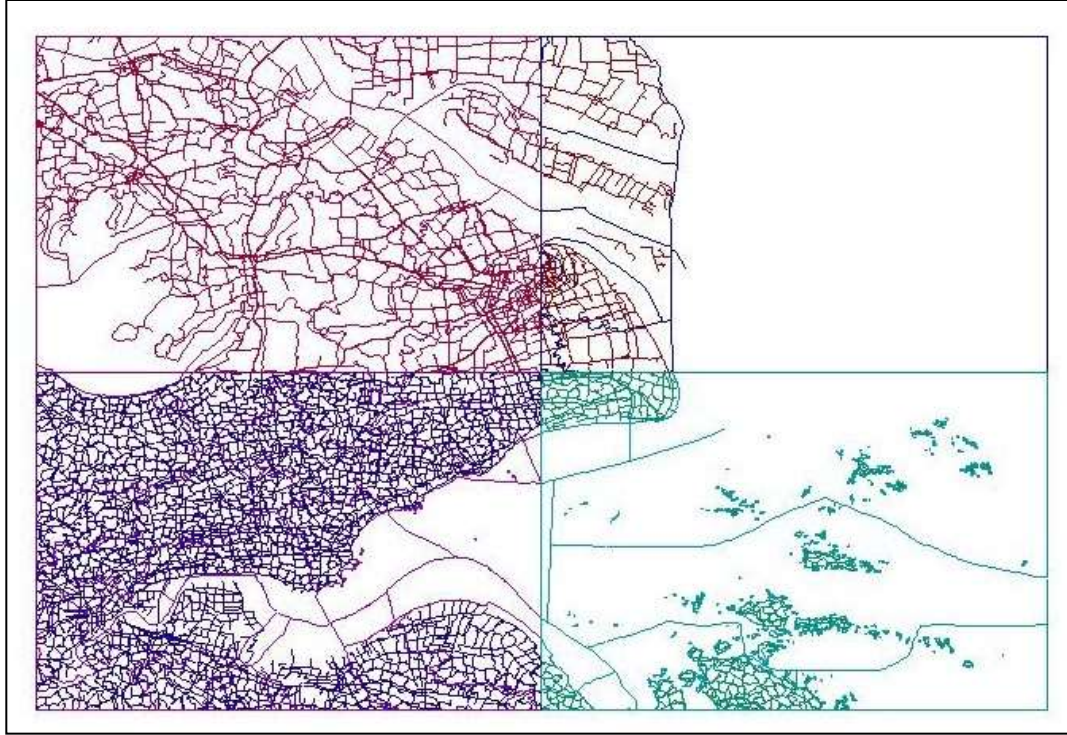
-Harmonization & Re-modelling



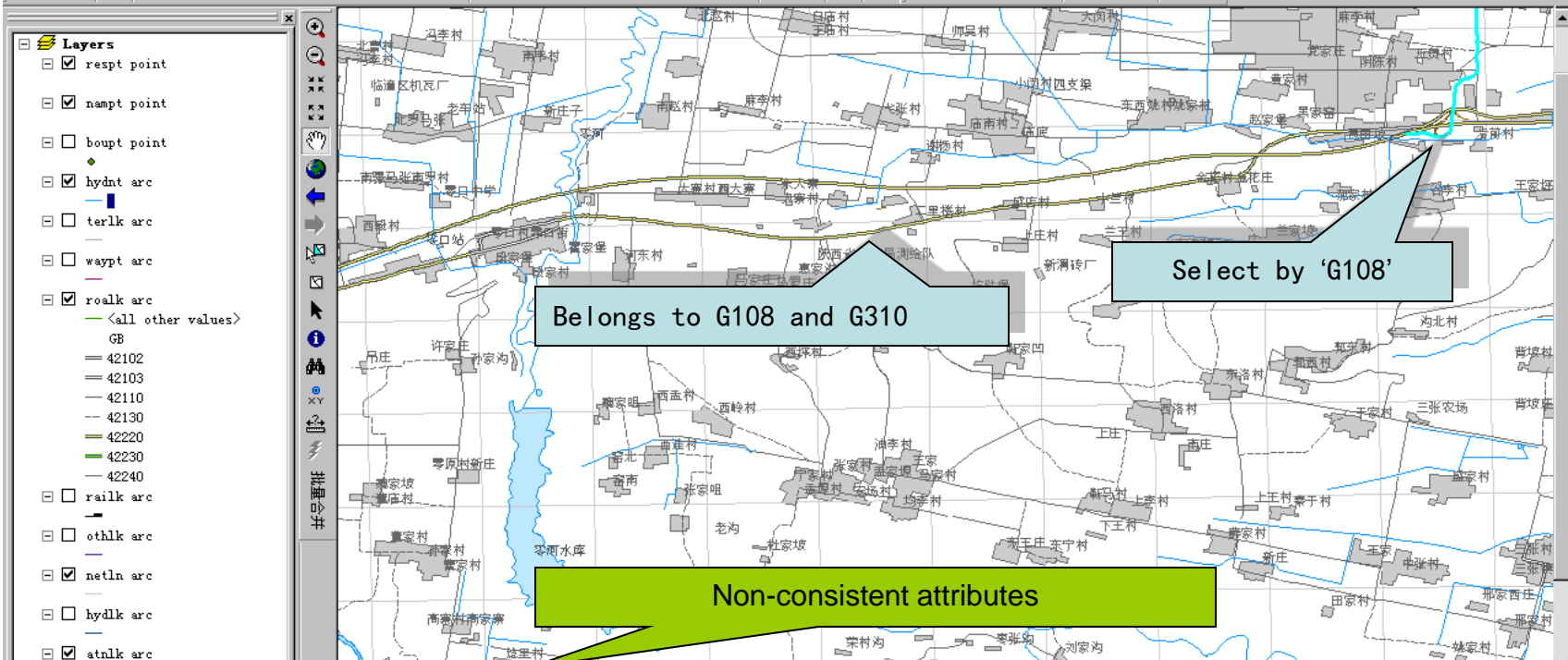
■ Distributed Datasets with same standards



- Link features in different dataset



Before upgrading



Attributes of roalk arc

FID	Shape	FNODE#	TNODE#	LPOLY#	RPOLY#	LENGTH	ROALK#	ROALK-ID	GB	RN	NAME	RTEG
1272	Polyline	489	478	0	0	.002048	1272	1272	42220	G31061	连(云港)-二级	沥
1274	Polyline	138	132	0	0	.006142	1274	1274	42102	G31061		
514	Polyline	150	167	0	0	.001433	514	514	42220	G10861	北(京)-昆二级	
600	Polyline	66	101	0	0	.001254	600	600	42220	G10861	北(京)-昆二级	沥
952	Polyline	101	107	0	0	.000465	952	952	42220	G10861	北(京)-昆二级	沥
953	Polyline	107	115	0	0	.001311	953	953	42220	G10861	北(京)-昆二级	沥
956	Polyline	115	124	0	0	.001193	956	956	42220	G10861	北(京)-昆二级	沥
957	Polyline	124	131	0	0	.001608	957	957	42220	G10861	北(京)-昆二级	沥
976	Polyline	33	66	0	0	.003039	976	976	42220	G10861	北(京)-昆二级	沥
1023	Polyline	131	150	0	0	.002182	1023	1023	42220	G10861	北(京)-昆二级	
1053	Polyline	167	181	0	0	.005232	1053	1053	42220	G10861	北(京)-昆二级	
440	Polyline	259	231	0	0	.008875	440	440	42220	G04561	连(云港)-高速	沥
441	Polyline	231	216	0	0	.004003	441	441	42220	G04561	连(云港)-高速	沥

After upgrading

Select by 'G108'

With unique Entity ID

Uniform catalogue code

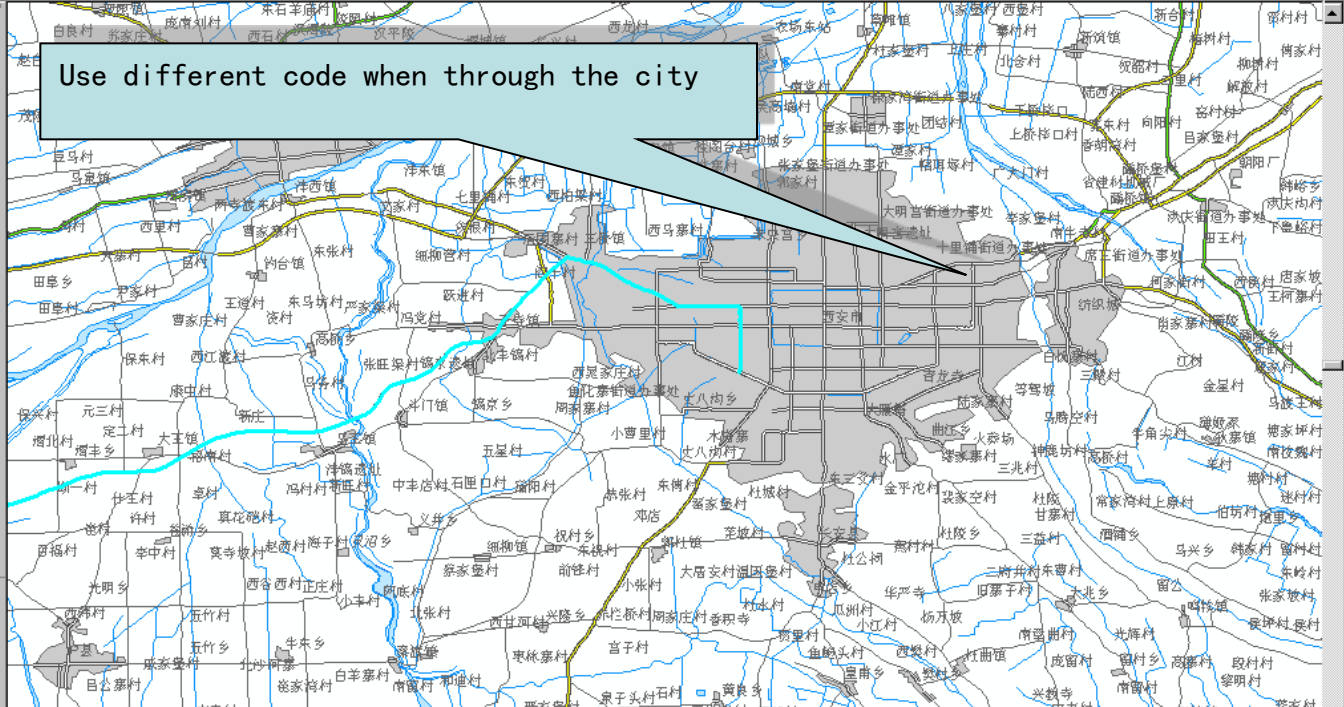
Attributes of 5ROALN

FID	Shape #	FEATID	ENTIID	ENTIID1	ENTIID2	ENTIID3	ENTIID4	CLASID	CLASID92	NAME	RDPAC
938	Polyline	0	G108000000	G310000000				430501	42102		
941	Polyline	0	G108000000	G310000000				420100	42220	连(云港)-	
949	Polyline	0	G108000000					420100	42220	北(京)-昆	
950	Polyline	0	G108000000					420100	42220	北(京)-昆	
953	Polyline	0	G108000000					420100	42220	北(京)-昆	
954	Polyline	0	G108000000					420100	42220	北(京)-昆	
973	Polyline	0	G108000000					420100	42220	北(京)-昆	
993	Polyline	0	G108000000	G310000000				420100	42220	连(云港)-	
995	Polyline	0	G108000000	G310000000				420100	42220	连(云港)-	
996	Polyline	0	G108000000	G310000000				420100	42220	连(云港)-	
997	Polyline	0	G108000000	G310000000				420100	42220	连(云港)-	
998	Polyline	0	G108000000	G310000000				420100	42220	连(云港)-	
1001	Polyline	0	G108000000	G310000000				420100	42220	连(云港)-	

Before upgrading

Use different code when through the city

- Layers**
- 25old
 - old
 - new
 - 25new
 - 25RESPT
 - 25HFCTP
 - 25TFCPT
 - 25PLNPT
 - 25TERPT
 - 25CPTPT
 - 25MARPT
 - 25HYDPT
 - 25HYDLN
 - 25RESLN
 - 25HFCLN
 - 25RAILN
 - 25GRDLN
 - 25TFCLN



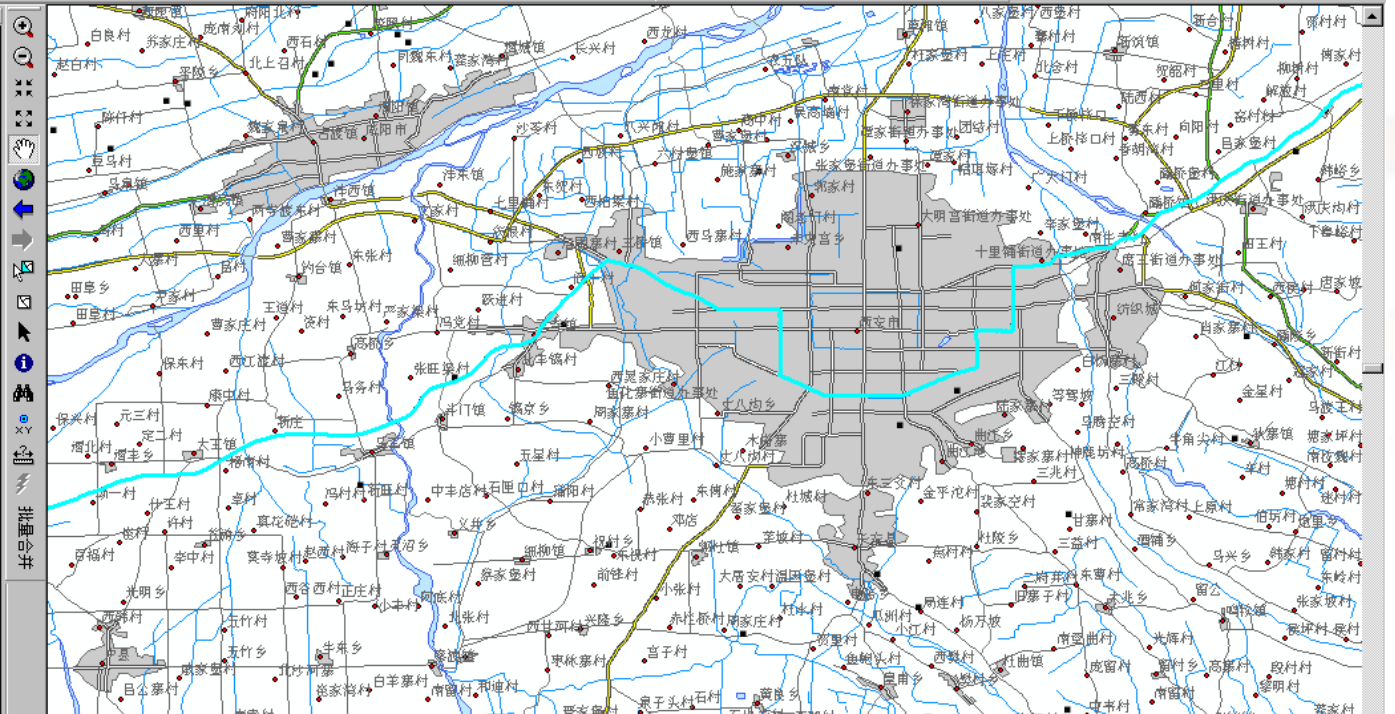
Attributes of roalk arc

FID	Shape	FNODE#	TNODE#	LPOLY#	RPOLY#	LENGTH	ROALK#	ROALK-ID	CODE	GB	RN	TCLASS
2991	Polyline	1960	5155	0	0	.018723	2991	3001	317	42220	G10861	二级
2992	Polyline	5154	5158	0	0	.062672	2992	3002	317	42220	G10861	二级
3022	Polyline	5195	3470	0	0	.027413	3022	3032	362	42102	G10861	二级
3023	Polyline	5195	5180	0	0	.008803	3023	3033	362	42102	G10861	二级
3027	Polyline	5180	5172	0	0	.021105	3027	3037	362	42102	G10861	二级
3344	Polyline	5465	5060	0	0	.008337	3344	3355	317	42220	G10861	二级
3345	Polyline	5058	5465	0	0	.014692	3345	3356	362	42102	G10861	二级
3435	Polyline	5515	5083	0	0	.002337	3435	3446	317	42220	G10861	二级
3436	Polyline	2047	5516	0	0	.019383	3436	3447	317	42220	G10861	二级
3437	Polyline	5516	5515	0	0	.009478	3437	3448	362	42102	G10861	二级
3445	Polyline	1655	5521	0	0	.004100	3445	3456	362	42102	G10861	二级
3446	Polyline	5521	5202	0	0	.008531	3446	3457	317	42220	G10861	二级
3447	Polyline	5202	1709	0	0	.009587	3447	3458	317	42220	G10861	二级
3507	Polyline	6237	4729	0	0	.007847	3507	3518	317	42220	G10861	二级

Record: 0 | Show: All Selected | Records (61 out of 3642 Selected) | Options

After upgrading

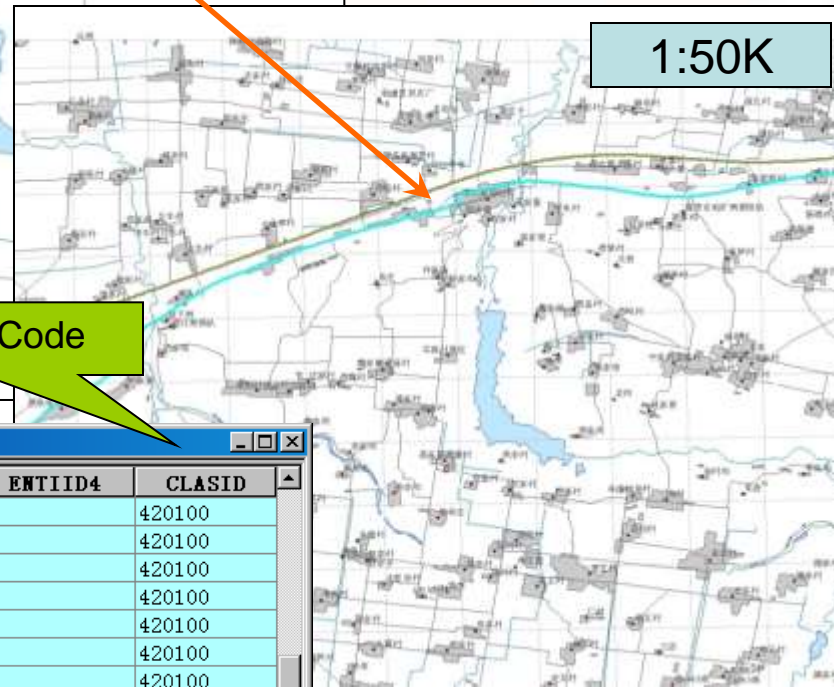
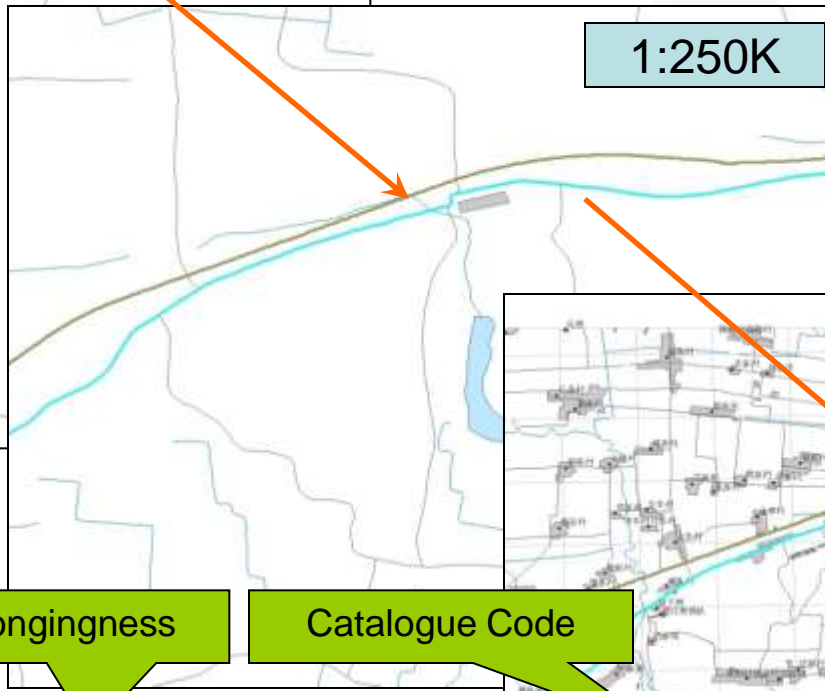
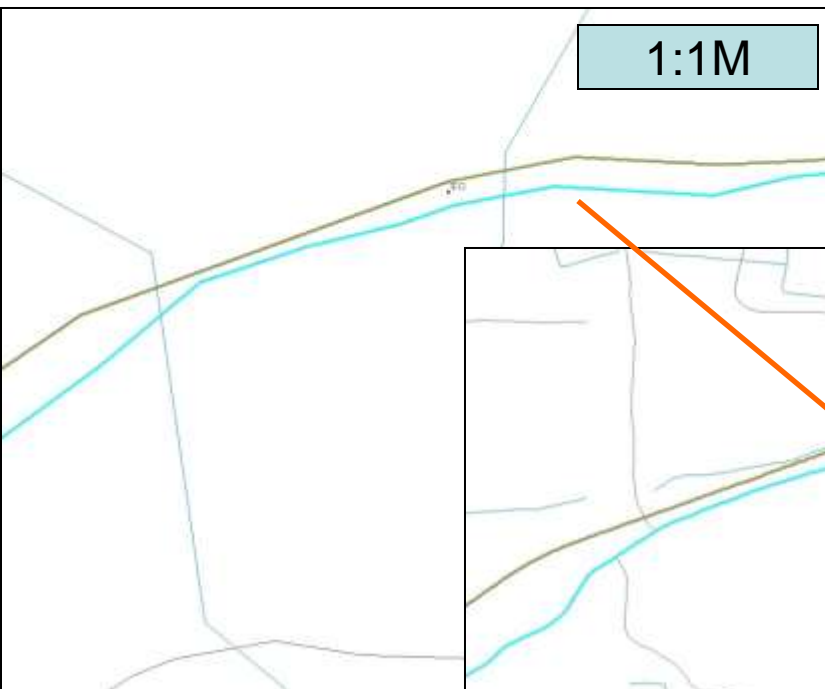
- 25old
- old
- new
- 25New
- 25RESPT
- 25HFCTPT
- 25TFCTPT
- 25PLNPT
- 25TERPT
- 25CPTPT
- 25MARPT
- 25HYDPT
- 25RESLN
- 25HFCLN
- 25RAILN
- 25GRDLN
- 25TFCLN
- 25TERLN



Attributes of 25ROALN

FID	Shape #	FEATID	ENTIID	ENTIID1	ENTIID2	ENTIID3	ENTIID4	CLASID	CLASID92	NAME	RDPAC
3575	Polyline	0	G108000000	G310000000				430501	42102		
3576	Polyline	0	G108000000	G310000000				430501	42102		
3577	Polyline	0	G108000000	G310000000				430501	42102		
3578	Polyline	0	G108000000	G310000000				430501	42102		
3581	Polyline	0	G108000000	G310000000				430501	42102		
3582	Polyline	0	G108000000	G310000000	G312000000			430501	42102		
3585	Polyline	0	G108000000	G210000000	G310000000	G312000000		430501	42102		
3586	Polyline	0	G108000000	G310000000	G312000000			430501	42102		
3587	Polyline	0	G108000000	G310000000	G312000000			430501	42102		
3588	Polyline	0	G108000000	G310000000	G312000000			430501	42102		
3590	Polyline	0	G108000000	G310000000				430501	42102		
3591	Polyline	0	G108000000	G310000000				430501	42102		
3592	Polyline	0	G108000000	G310000000	G312000000			430501	42102		

Feature linkage between different scale datasets via Entity ID
 "ENTIID=G108000000"



Entity ID

Multi-belongingness

Catalogue Code

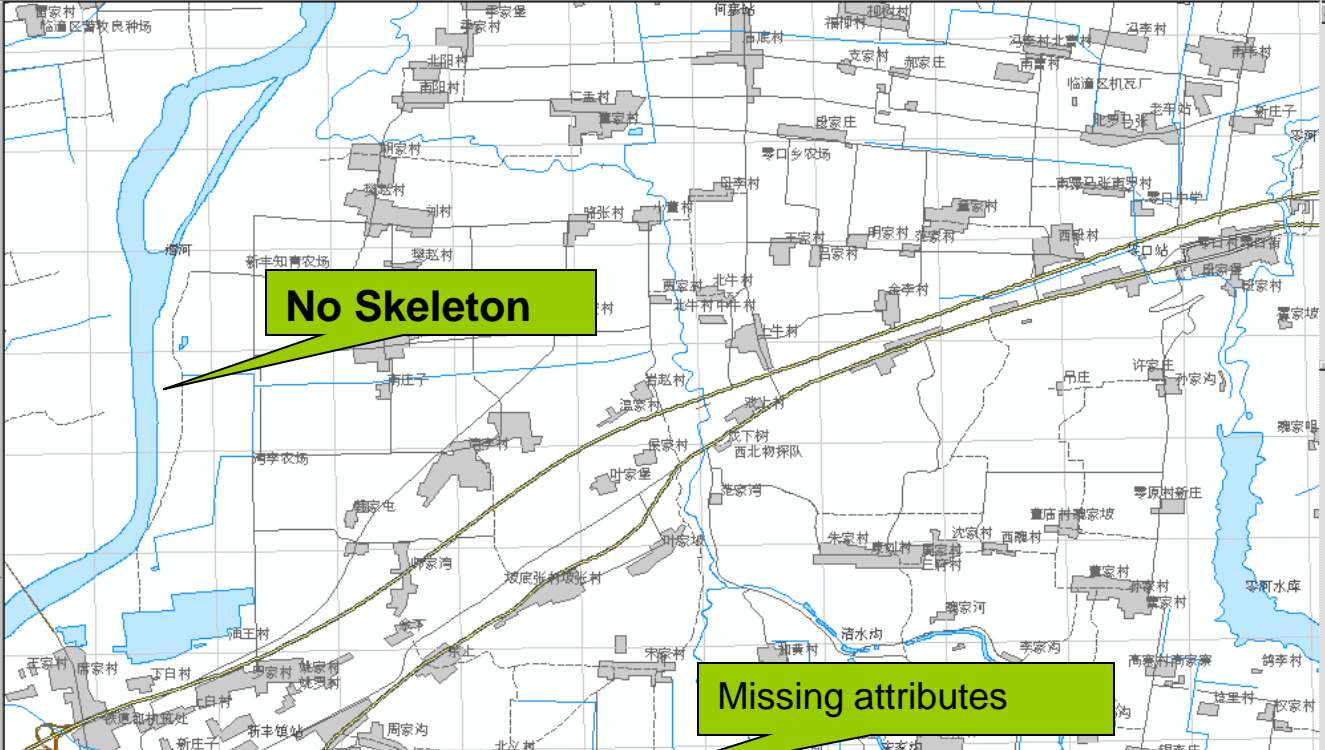
Selected Attributes of 100ROALN

FID	Shape #	ENTIID	ENTIID1	ENTIID2	ENTIID3	ENTIID4	CLASID
763	Polyline	G108000000	G310000000	G312000000			420100
766	Polyline	G108000000	G310000000	G312000000			420100
777	Polyline	G108000000	G310000000				420100
780	Polyline	G108000000	G310000000				420100
781	Polyline	G108000000	G310000000	G312000000			420100
782	Polyline	G108000000	G210000000	G310000000	G312000000		420100
783	Polyline	G108000000	G310000000	G312000000			420100
789	Polyline	G108000000	G310000000				420100
811	Polyline	G108000000	G310000000				420100

Record: 1 Show: All Selected Records (48 out of 1798 Selected) Options

Before upgrading

- Layers**
- 5new
 - 5old
 - respt point
 - nampt point
 - boupt point
 - hydarc
 - terlk arc
 - waypt arc
 - roalk arc
 - railk arc
 - othlk arc
 - netln arc
 - hydtk arc
 - atnlk arc
 - resnt polygon
 - hydnt polygon
 - GB
 - 21012; 23010; 24010
 - bount polygon
 - 25new



No Skeleton

Missing attributes

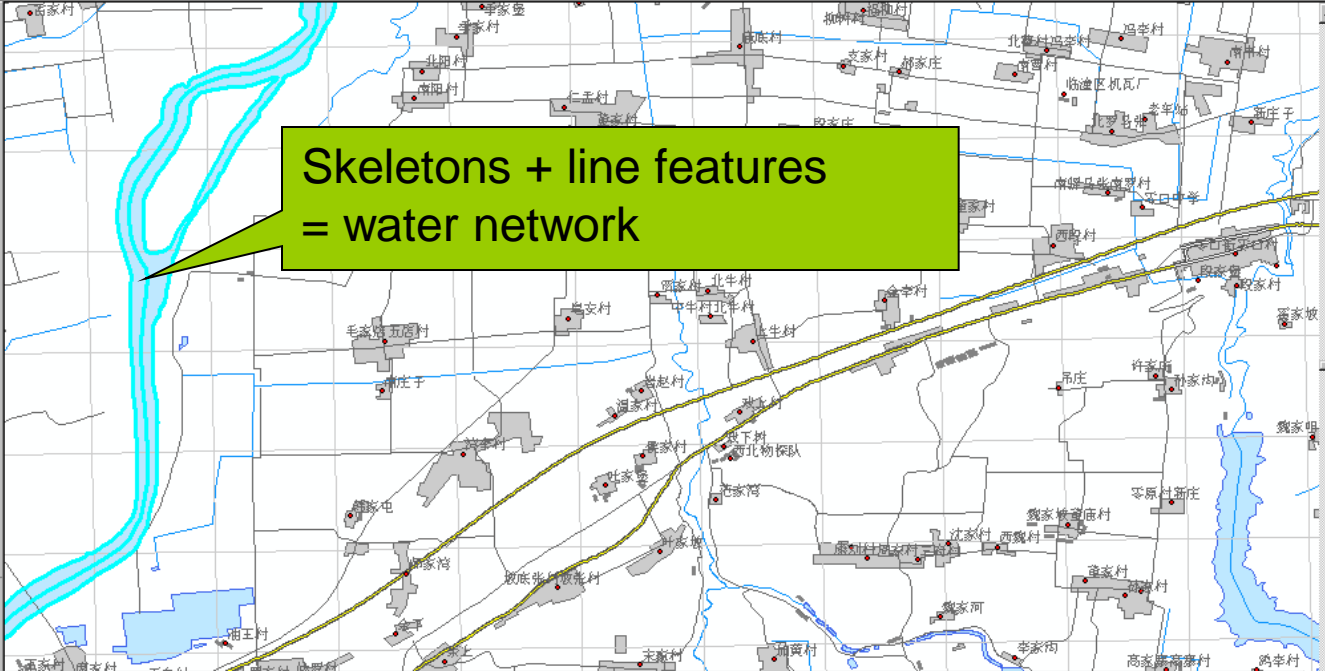
Attributes of hydnt polygon

FID	Shape	AREA	PERIMETER	HYDNT#	HYDNT-ID	GB	HYDC	NAME	WQL	VOL	N
2	Polygon	.000174	.190559	2	1	21012	DD010003	渭河		0	0
3	Polygon	.000065	.043065	3	2	79200				0	0
4	Polygon	.000007	.013608	4	3	99600				0	0
5	Polygon	.000001	.003136	5	4	23010		淡		0	0
6	Polygon	.000001	.006496	6	5	24010				0	0
7	Polygon	.000000	.000984	7	6	23010		淡		0	0
8	Polygon	.000000	.006087	8	7	23010		淡		0	0
9	Polygon	.000000	.003310	9	8	23010		淡		0	0
10	Polygon	.000000	.001889	10	9	23010		淡		0	0
11	Polygon	.000089	.081147	11	10	24010	DD02443R	零河水库		4195	0
12	Polygon	.000009	.016245	12	11	99600				0	0

Record: 1 | Show: All Selected | Records (0 out of 118 Selected) | Options

After upgrading

- STERLN
- 5ROALN
 - <all other values>
 - CLASID
 - 420100
 - 420200
 - 420800; 440100; 440
 - 430501
 - 430502
- 5RESLN
- 5RAILN
- 5PIPLN
- 5OTALN
- 5HFCLN
- 5GRDLN
- 5VEGLN
- 5BOULN
- 5SOIPL
- 5TERPL



Skeletons + line features = water network

Attributes of 5HYDPL

FID	Shape *	FEATID	ENTIID	ENTIID1	ENTIID2	ENTIID3	ENTIID4	CLASID	CLASID92	NAME	WQL	VOL
8	Polygon	0	DD02443R					240101	24010	零河水库		419
76	Polygon	0	DD02434R					240101	24010	戏河水库		
95	Polygon	0	DD02424R					240101	24010	玉川水库		
0	Polygon	0	DD010003					210101	21012	渭河		

Record: 0 Show: All Selected Records (1 out of 115 Selected)

Attributes of 5HYDLN

FID	Shape *	FEATID	ENTIID	ENTIID1	ENTIID2	ENTIID3	ENTIID4	CLASID	CLASID92	NAME	PERIOD
207	Polyline	0	DD010P76					210400	21011	戏河	
208	Polyline	0	DD010P76					210400	21011	戏河	
203	Polyline	0	DD010003					210400	21012	渭河	
0	Polyline	0						220000	22030		
1	Polyline	0						220000	22030		

Record: 0 Show: All Selected Records (1 out of 209 Selected)

Feature linkage between different scale datasets via Entity ID

"ENTIID=DD010003"

1:1M

1:250K

1:50K

Entity ID

Multi-belongingness

Catalogue Code

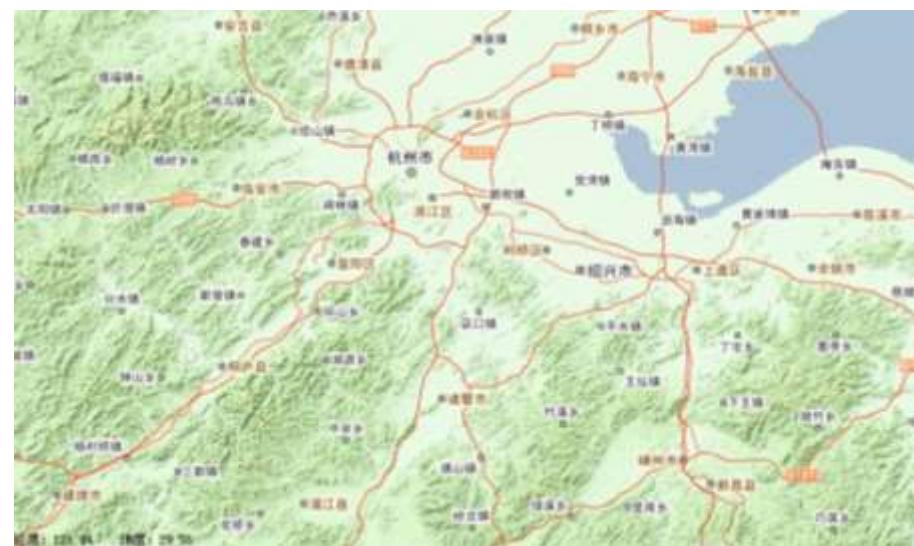
Selected Attributes of 100HID...

FID	Shape *	ENTIID	ENTIID1	ENTIID2	ENTIID3	ENTIID4	CLASID	CLASID92	NAME
2279	Polyline	DD010003					210101	21011	渭河
2282	Polyline	DD010003					210101	21011	渭河
2327	Polyline	DD010003					210101	21011	渭河
2338	Polyline	DD010003					210101	21011	渭河
2348	Polyline	DD010003					210101	21011	渭河
2351	Polyline	DD010003					210101	21011	渭河

Record: 1 Show: All Selected Records (13 out of 6363 Selected) Options

Upgrade for Smarter Services

-Cartography for on-line Services



Upgrade for Smarter Services

-Cartography for on-line Services



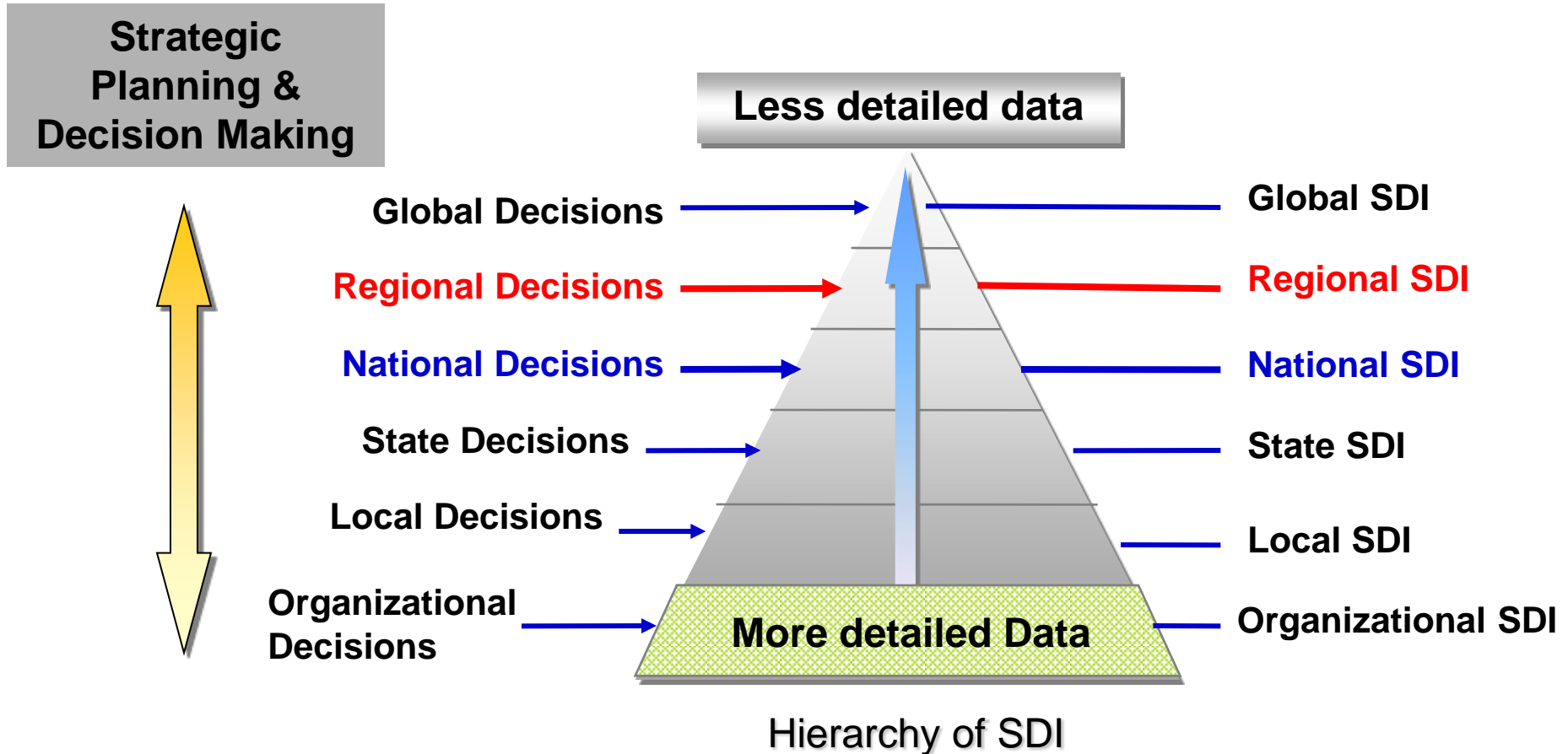
Level of Details

Outlines

- The development of NSDI in China
- Data Upgrade for better services
- **Suggestions**

Suggestion

-- Regional SDI for AP



Success depends on cooperation between individuals and agencies

Suggestion

-- Regional SDI for AP

- European Commission Directive 2007/2/EC: establishing an Infrastructure for Spatial Information in the European Community (INSPIRE) to ensure that the spatial data infrastructures of the Member States are compatible and usable in a Community and transboundary context.
- The Directive requires that common implementing Rules (IR) are adopted in a number of specific areas (Metadata, Data Specifications, Network Services, Data and Service Sharing and Monitoring and Reporting).

Why not Build a Regional SDI for AP Region!

The screenshot shows the INSPIRE website home page. At the top, it features the European Commission logo and the text 'INSPIRE Infrastructure for Spatial Information in the European Community'. Below this, there is a navigation menu with links for 'About', 'Implementation', and 'Adoption'. The main content area is titled 'INSPIRE DIRECTIVE' and contains a detailed introduction to the directive, its objectives, and a list of legislative acts. A search bar and a 'LOGIN / REGISTRATION' button are also visible.

The logo for INSPIRE GEOPORTAL, featuring the European Union flag and the text 'INSPIRE GEOPORTAL Enhancing access to European spatial data'.

The screenshot shows the INSPIRE GEOPORTAL interface. It features a map of Europe with several information boxes overlaid. The boxes include 'Discovery / Viewer', 'Metadata Editor', and 'Geospatial Browser'. The 'Discovery / Viewer' box contains a search bar and a 'SEARCH INSPIRE' button. The 'Metadata Editor' box contains a 'Create metadata' button. The 'Geospatial Browser' box contains a 'Technical metadata' button.



国家基础地理信息中心

National Geomatics Center of China

Thanks

